

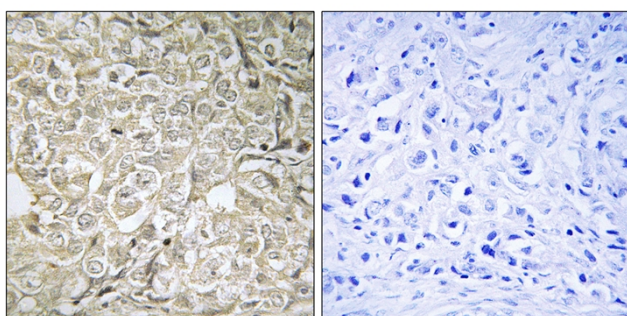


Rab 37 Polyclonal Antibody

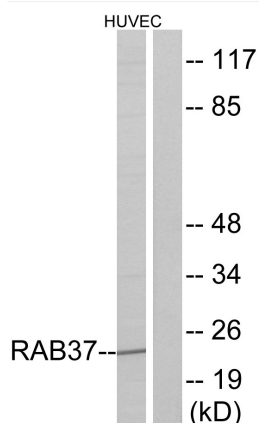
Catalog No	YP-Ab-16200
Isotype	IgG
Reactivity	Human;Rat;Mouse;
Applications	WB;IHC;IF;ELISA
Gene Name	RAB37
Protein Name	Ras-related protein Rab-37
Immunogen	The antiserum was produced against synthesized peptide derived from human RAB37. AA range:170-219
Specificity	Rab 37 Polyclonal Antibody detects endogenous levels of Rab 37 protein.
Formulation	Liquid in PBS containing 50% glycerol, 0.5% BSA and 0.02% sodium azide.
Source	Polyclonal, Rabbit,IgG
Purification	The antibody was affinity-purified from rabbit antiserum by affinity-chromatography using epitope-specific immunogen.
Dilution	WB: 1/500 - 1/2000. IHC: 1/100 - 1/300. ELISA: 1/5000.. IF 1:50-200
Concentration	1 mg/ml
Purity	≥90%
Storage Stability	-20°C/1 year
Synonyms	RAB37; Ras-related protein Rab-37
Observed Band	26kD
Cell Pathway	Cytoplasmic vesicle. Secretory granules. .
Tissue Specificity	Brain,Platelet,Prostate,Thalamus,Thymus,Trachea,
Function	similarity:Belongs to the small GTPase superfamily. Rab family.,subcellular location:Secretory granules.,
Background	Rab proteins are low molecular mass GTPases that are critical regulators of vesicle trafficking. For additional background information on Rab proteins, see MIM 179508.[supplied by OMIM, Apr 2006],
matters needing attention	Avoid repeated freezing and thawing!
Usage suggestions	This product can be used in immunological reaction related experiments. For more information, please consult technical personnel.



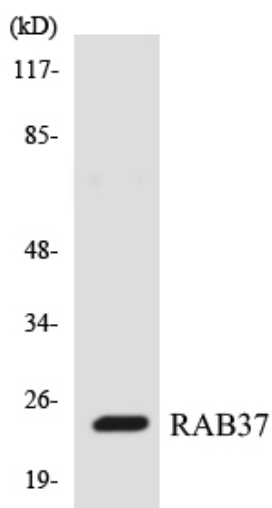
Products Images



Immunohistochemistry analysis of paraffin-embedded human prostate carcinoma tissue, using RAB37 Antibody. The picture on the right is blocked with the synthesized peptide.



Western blot analysis of lysates from HUVEC cells, using RAB37 Antibody. The lane on the right is blocked with the synthesized peptide.



Western blot analysis of the lysates from HepG2 cells using RAB37 antibody.